



Built-in Instruction



Built-in

RGB frames can be cast directly into concrete walls or floors (figures 1 and 2). Alternatively the frames can be cast into a loose section that is built in later. When the demands for fire safety are extremely high, frames can be mounted back-to-back (fig. 3). Such an installation can also be pressure tested.

For there to be sufficient space for the stay plate and compression plate there must be 5 mm (0.2") of clearance between the frame's inside and the cast hole (fig. 4). MCT Brattberg's expanded polystyrene casting forms simplifies fixing when casting and provides the necessary clearance (fig. 5).

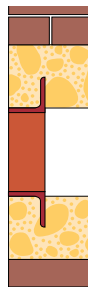


Fig. 1

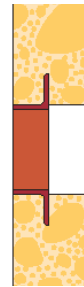


Fig. 2

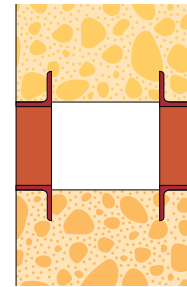


Fig. 3

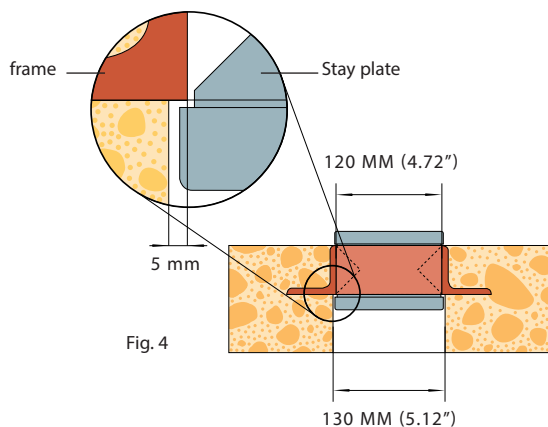
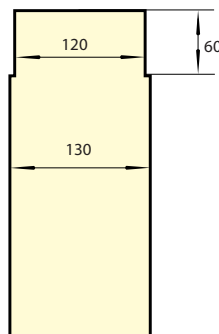


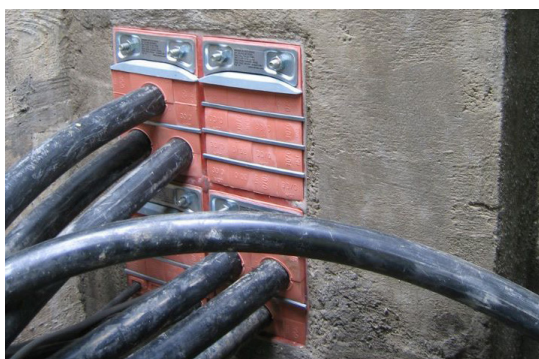
Fig. 4



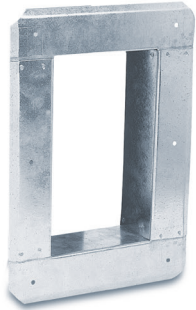
Polystyrene casting form
Fig. 5



MCT Brattberg's expanded polystyrene casting form.



RGG frames and the flanges of the Counter frame are screwed into the wall (fig. 6). A Lycron sealing strip should be used between the wall and the flange to provide a gas tight seal. The galvanised counter frame is available with three different standard depths, which are suitable for the most common wall thicknesses, see below.



Counter frame

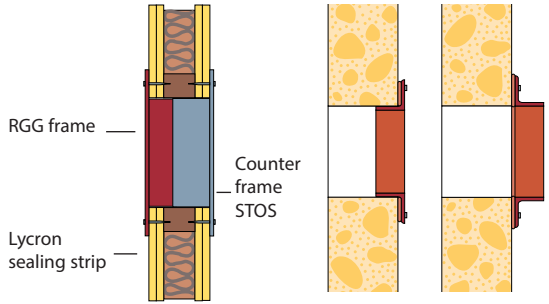


Fig.6

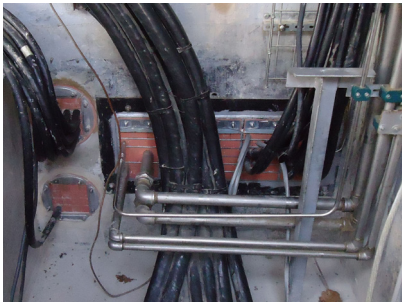
Fig. 7

Fig. 8

RGG and RGGO frames can also be bolted in place with the aid of, for example, expansion bolts. A Lycron sealing strip or sealant is used between the frame and the wall to provide a gas tight seal. There are two ways of bolting the frames in position, (figs. 7 and 8).

Where practically possible, fig. 7 should always be employed.

Wall thickness mm(inches)		
Counter frame/type	Min	Max
1	80 (3,15")	110 (4.33")
2	110 (4.33")	150 (5,91")
3	150 (5.91")	190 (7.48")



RGP and RGPO frames are installed on one side of the wall when normal demands are made for fire safety, (see fig. 9.) When the safety demands are particularly high two RGP frames are installed back-to-back (fig.10). RGP can be installed in drilled or cast holes, or in a pipe that is cast in or bolted. Casting is made easier if MCT Brattberg casting forms are used, see picture.

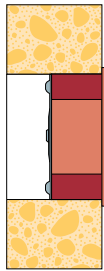


Fig. 9

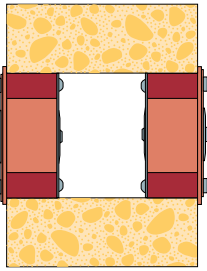


Fig. 10



MCT Brattberg's casting form.

**Sweden**

Head office
MCT Brattberg AB
Phone: +46 - 455 37 52 00
Email: info@mctbrattberg.se

Address

SE-371 92 Karlskrona, Sweden

United Kingdom

MCT Brattberg Ltd
Phone: +44 - 170 624 4890
E-mail: info@mctbrattberg.co.uk

Address

Commerce Street
Carrs Industrial Estate Haslingden
Lancashire BB4 5JT, England

USA

MCT Brattberg Inc
Phone: +1 346 260 9124
Email: sales@brattberginc.com

Address

3332 Spring Stuebner Rd.
Suite G, Spring, TX 77379, USA

Australia

MCT Brattberg Australia Pty Ltd
Phone: +61 (0)44 710 4422
Email: info@mctbrattberg.com.au

Address

Level 2, Margaret Graham Building
Lot Fourteen
1a Frome Road
Adelaide, SA 5000, Australia

United Arab Emirates

MCT Brattberg UAE
Dubai, United Arab Emirates
Phone: +971 50 277 2151
Email: sony.jose@mctbrattberg.ae

Please visit our website for contact information to your closest MCT Brattberg representative:

www.mctbrattberg.com