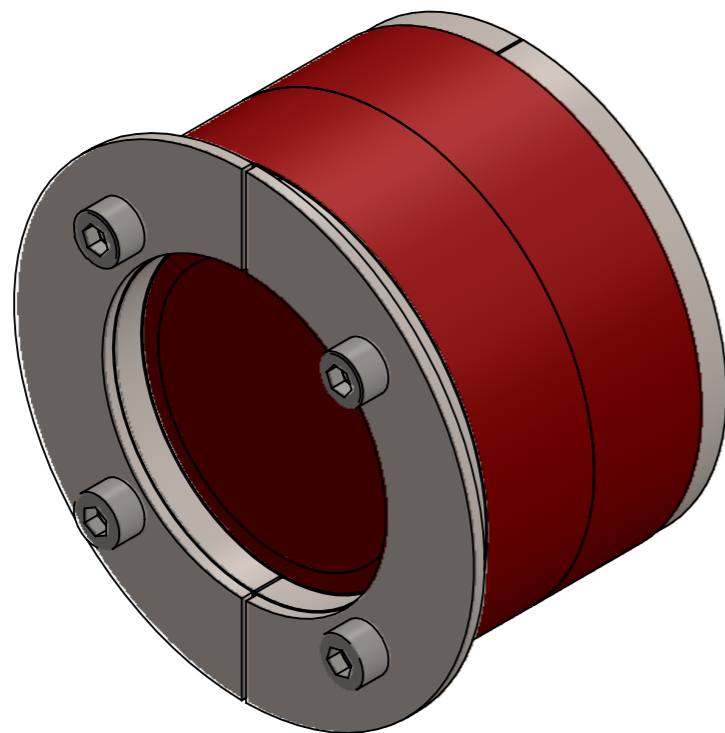
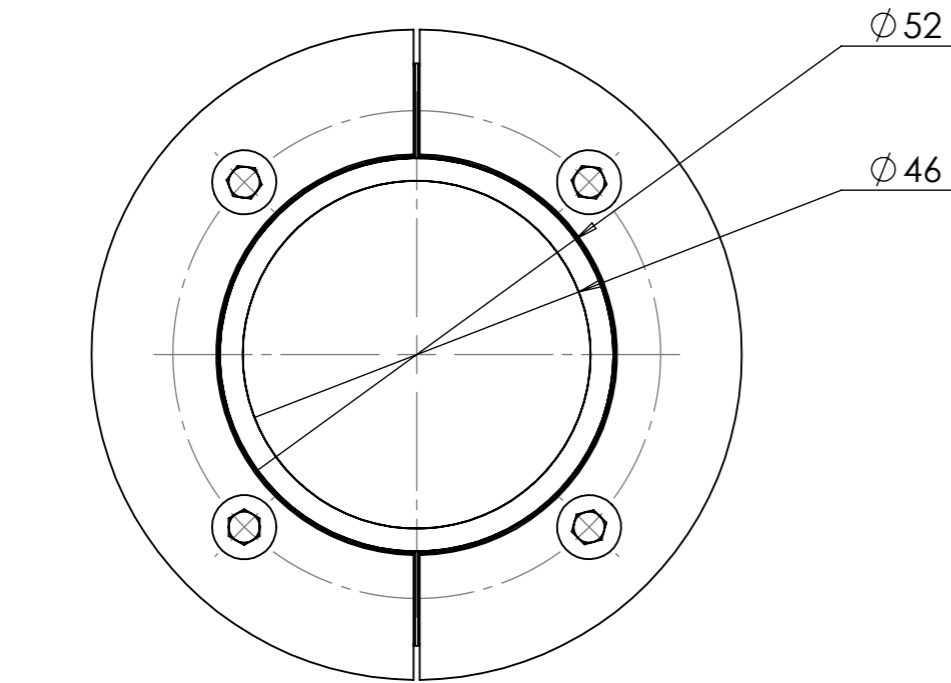
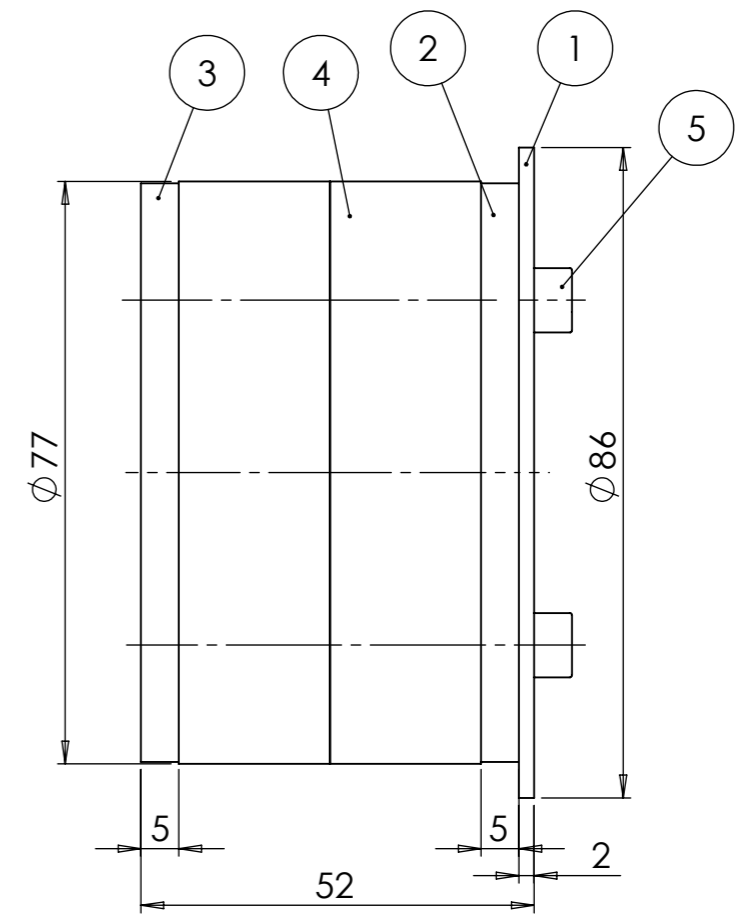


THIS DOCUMENT MUST NOT BE COPIED WITHOUT OUR WRITTEN PERMISSION, AND THE CONTENTS THEREOF MUST NOT BE IMPARTED TO A THIRD PARTY NOR BE USED FOR ANY UNAUTHORIZED PURPOSE. CONTRAVENTION WILL BE PROSECUTED.



REVISIONS			
REV.	DESCRIPTION	DATE	SIGNATURE
A		2017-09-06	JA



ITEM NO.	TITLE	DRAW. No. / DESCRIPTION / MATERIAL	QTY.
1	CAPTURE PLATE	1 100861	1
2	FRONT PLATE	1 100861	1
3	BACK PLATE	1 100861	1
4	RUBBER SEAL	1 100862	2
5	ISO 4762 M5 x 50 --- 22N	Hexagon socket head cap screw ISO 4762 - M5 x 50	4
Ritad Drawn	Kontr. Check	Granskad Reviewed	Godkänd Approved
JA	JA	LS	ML
170331	170906	180831	180831
Tolerans där ej annat anges Tolerance unless otherwise not stated. ISO 2768 M		Smsf. nr. Assembly drawing no.	Ersätter Replaces
Ytjämnhet där ej annat anges. Surface finish otherwise not stated.		Material	Ersatt av Replaced of
		316L	Vikt Weight 0,55 Kg
SR-77			Alla mått och uppgifter avser färdig produkt om ej annat anges All measures and other information refer to finished products unless otherwise not stated.
Kund ordernr. Customer order no			Ritn. nr. Draw. no.
			1170090
MCT BRATTBERG			Rev. A