


LB 274 rev.4


The purchaser should make the manufacturer aware of any External effects or Aggressive substances that the equipment may be exposed to.

Dimensions for pipes and drilled holes			
RGP type	RGP ID mm	RGP type	RGP ID Inches
RGP 50	50-51	RGP 2"	1.97-2.01"
RGP 70	70-71	RGP3"	3-3.04"
RGP 100	100-102	RGP 4"	4-4.08"
RGP 125	125-127	RGP 5"	5-5.08"
RGP 150	150-152	RGP 6"	6-6.08"
RGP 200	200-202	RGP 8"	8-8.08"
RGP 300	300-302	RGP 11.8"	11.8"11.9"

1. These transits are suitable for use within an operating temperature range of -40°C to +70°C.
2. The blocks must be assembled using the manufacturer's supplied tallow lubricant which must be applied to all faces of the sealing blocks prior to assembly.
3. The transits are only for use with circular cables and circular pipes
4. Cables and pipes must be effectively clamped to prevent pulling and twisting being transmitted.
5. The fasteners of variants shall be torqued up to the values defined below:
 RGP50/2" =3Nm
 RGP50S/2" =2.5Nm
 RGP70/3" =4Nm
 RGP100/4" =6Nm
 RGP125/5" =7Nm
 RGP150/6" =12Nm
 RGP200/8" =15Nm
6. The assembled frames and blocks shall re-torqued after a period of 24 hours to the values listed above. The torque value shall then be checked again after 48 hours and re-tightened if required. This shall be completed prior to the installation being energized.
7. When the Sleeve is used for increased safety or dust protection, the Sleeve shall be suitably sealed (in accordance with IEC 60079-14) to maintain the ingress protection rating of the associated enclosure
8. Non-metallic surfaces shall be protected from electrostatic charging hazard

IECEX Bas 16.0053U  0598
 Ex eb IIc Gb, Ex tb IIIc Db
 BASEEFA16ATEX0062U
 -40°C to +70°C / IP65 RGP.
 WARNING POTENTIAL ELECTROSTATIC CHARGING HAZARD
 SEE INSTRUCTION
 MCT Brattberg AB

RGP Component

IECEX Bas 16.0111X  0598
 Ex eb IIc Gb, Ex tb IIIc Db
 BASEEFA16ATEX0063X
 -40°C to +70°C / IP65 RGP.
 WARNING POTENTIAL ELECTROSTATIC CHARGING HAZARD
 SEE INSTRUCTION
 MCT Brattberg AB

RGP Equipment

This equipment has been assessed against following standards:

- IEC 60079-0:2017 Ed 7**
- IEC 60079-7:2015 Ed 5**
- IEC 60079-31:2013 Ed 2**

Maximum and minimum cable size for each module for RGP series. All cables has to be additional clamped.

Module 15	
15/	For cable Ø
4	3,5-4,5
5	4,5-5,5
6	5,5-6,5
7	6,5-7,5
8	7,5-8,5
9	8,5-9,5

Module 20	
20/	For cable Ø
4	3,5-4,5
5	4,5-5,5
6	5,5-6,5
7	6,5-7,5
8	7,5-8,5
9	8,5-9,5
10	9,5-10,5
11	10,5-11,5
12	11,5-12,5
13	12,5-13,5
14	13,5-14,5
15	14,5-15,5
16	15,5-16,5

Module 30	
30/	For cable Ø
12	11,5-12,5
13	12,5-13,5
14	13,5-14,5
15	14,5-15,5
16	15,5-16,5
17	16,5-17,5
18	17,5-18,5
19	18,5-19,5
20	19,5-20,5
21	20,5-21,5
22	21,5-22,5
23	22,5-23,5
24	23,5-24,5

Module 40	
40/	For cable Ø
22	21,5-23,5
24	23,5-25,5
26	25,5-27,5
28	27,5-29,5
30	29,5-31,5
32	31,5-33,5
34	33,5-35,5

Module 60	
60/	For cable Ø
32	31,5-33,5
34	33,5-35,5
36	35,5-37,5
38	37,5-39,5
40	39,5-41,5
42	41,5-43,5
44	43,5-45,5
46	45,5-47,5
48	47,5-49,5
50	49,5-51,5
52	51,5-53,5
54	53,5-55,5

Module 90	
90/	For cable Ø
50	49,5-51,5
52	51,5-53,5
54	53,5-55,5
56	55,5-57,5
58	57,5-59,5
60	59,5-61,5
62	61,5-63,5
64	63,5-65,5
66	65,5-67,5
68	67,5-69,5
70	69,5-71,5
72	71,5-73,5
74	73,5-75,5
76	75,5-77,5
78	77,5-79,5
80	79,5-81,5

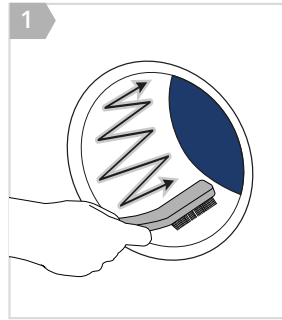
Module 120	
120/	For cable Ø
72	71,5-73,5
74	73,5-75,5
76	75,5-77,5
78	77,5-79,5
80	79,5-81,5
82	81,5-83,5
84	83,5-85,5
86	85,5-87,5
88	87,5-89,5
90	89,5-91,5

Module 120	
90/	For cable Ø
92	91,5-93,5
94	93,5-95,5
96	95,5-97,5
98	97,5-99,5
100	99,5-101,5
102	101,5-103,5
104	103,5-105,5
106	105,5-107,5
108	107,5-109,5
110	109,5-111,5

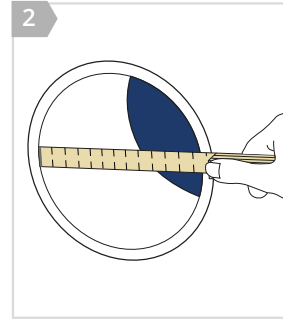
Add block modules	
20/	For cable Ø
4-8	3,5-8,5
9-13	8,5-13,5
30/	For cable Ø
14-18	13,5-18,5
19-23	18,5-23,5
40/	For cable Ø
24-28	23,5-28,5
29-33	28,5-33,5
60/	For cable Ø
34-38	33,5-38,5
39-43	38,5-43,5
44-48	43,5-49,5
90/	For cable Ø
50-58	49,5-59,5
60-68	59,5-69,5

A Dimensions for pipes and drilled holes

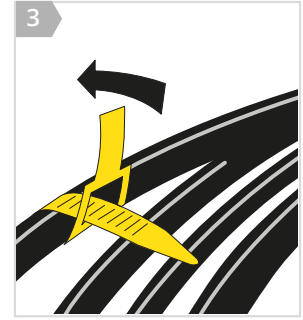
RGP type	RGP ID mm	RGP type	RGP ID Inches
RGP 50	50-51	RGP 2"	1.97-2.01"
RGP 70	70-71	RGP 3"	3-3.04"
RGP 100	100-102	RGP 4"	4-4.08"
RGP 125	125-127	RGP 5"	5-5.08"
RGP 150	150-152	RGP 6"	6-6.08"
RGP 200	200-202	RGP 8"	8-8.08"
RGP 300	300-302	RGP 11.8"	11.8"11.9"



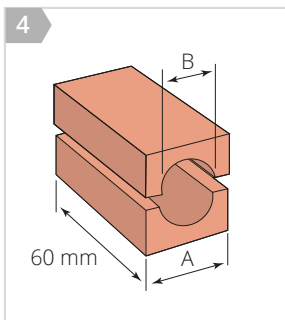
1 Clean the aperture.



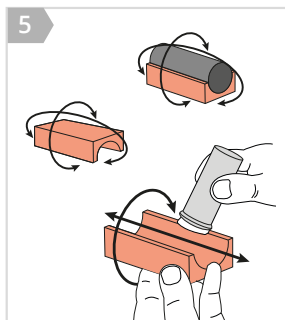
2 Measure and verify the aperture.



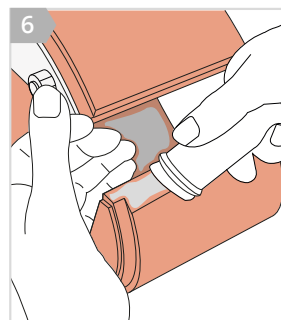
3 Measure the diameter of the cables and choose suitable blocks.



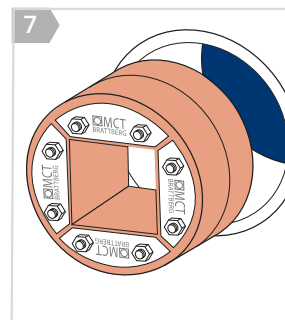
4 Insert Blocks are identified by their width (A) and hole diameter (B).



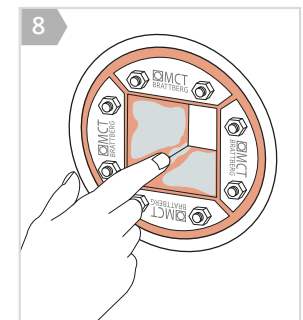
5 Lubricate all sealing surfaces on the Insert Blocks.



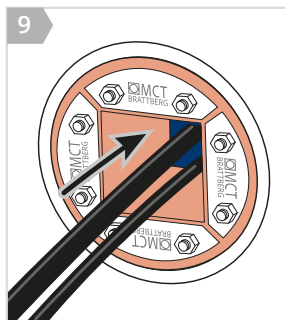
6 Lubricate inside the cut of the RGP thoroughly.



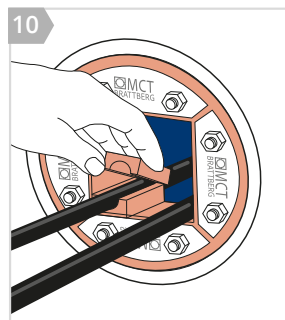
7 Insert the RGP frame in the opening. No lubricant should be applied to the hole or to the outside of the RGP.



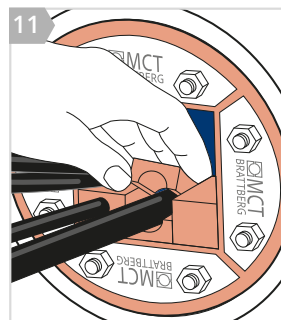
8 Lubricate the inside of the RGP thoroughly, especially into the corners.



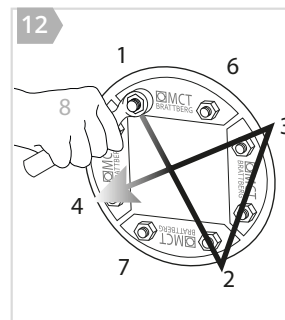
9 Route the cables/pipes through.



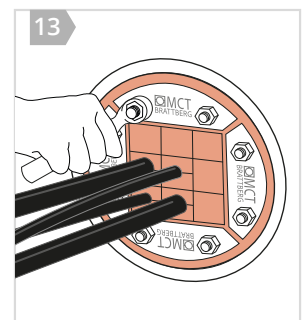
10 Insert the blocks according to your packing plan. The cables/pipes shall be parallel to the RGP.



11 Continue to fill the transit considering your RGPlan.

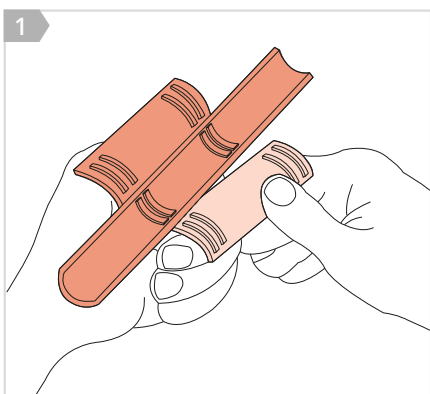


12 Tighten the nuts in diagonal order.

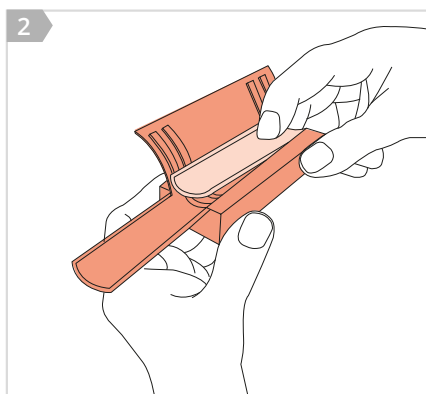


13 Tighten until 10-12 mm (0,39"-0,47") of thread is visible.

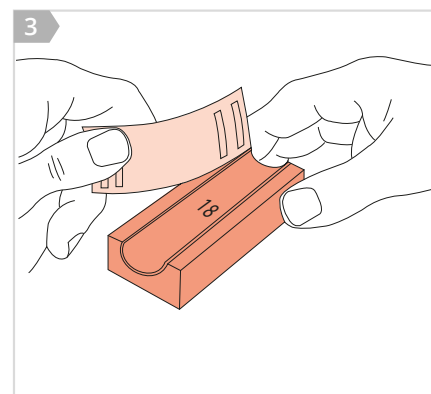
AddBlock



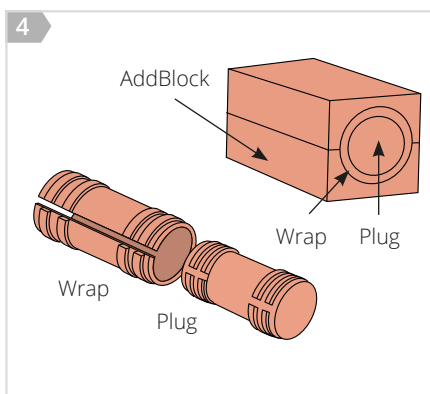
1
Tear off attached sheet to fit the dimension selected.



2
Place sheet into centre slot and affix it with the unique locking device.

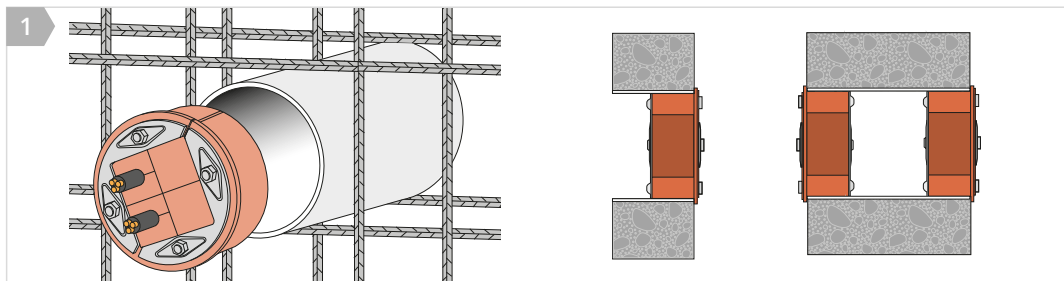
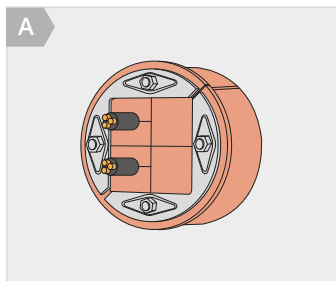


3
Tear off superfluous sheets.



4
Plugs for AddBlock

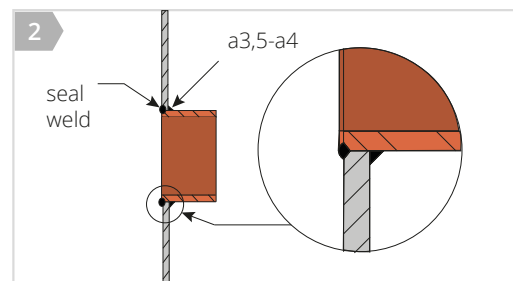
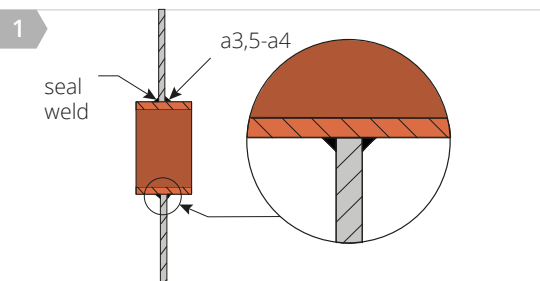
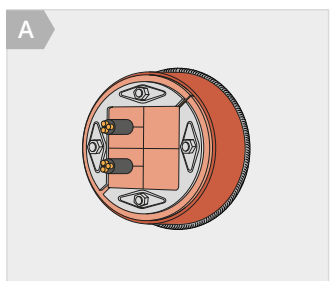
Installation Cast in



RGP can be installed in a pipe that is cast in or bolted.

Casting is made easier if MCT Brattberg casting forms are used.

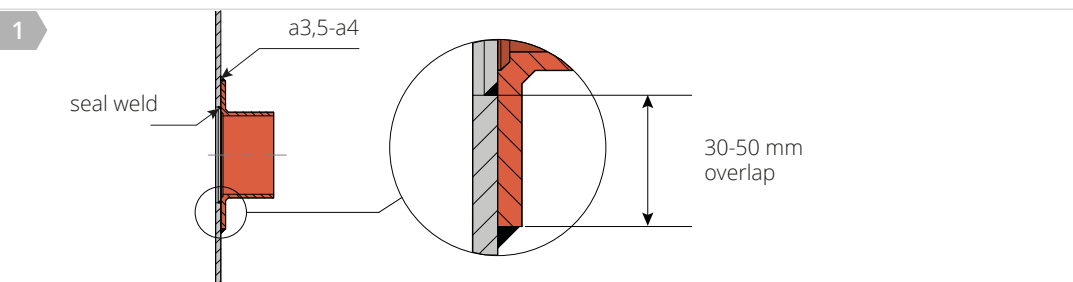
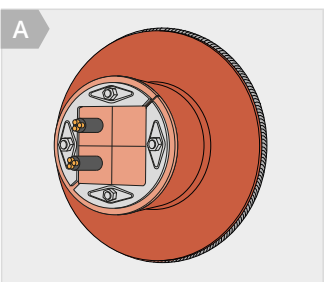
Installation S Sleeves



1. Position the S-type sleeve into the plate, maximum allowed root gap is 2 mm.
2. Tack weld in four places or every 100 mm around the sleeve.

3. Weld around the front side of the sleeve.
4. Complete by seal welding around the rear side of the sleeve

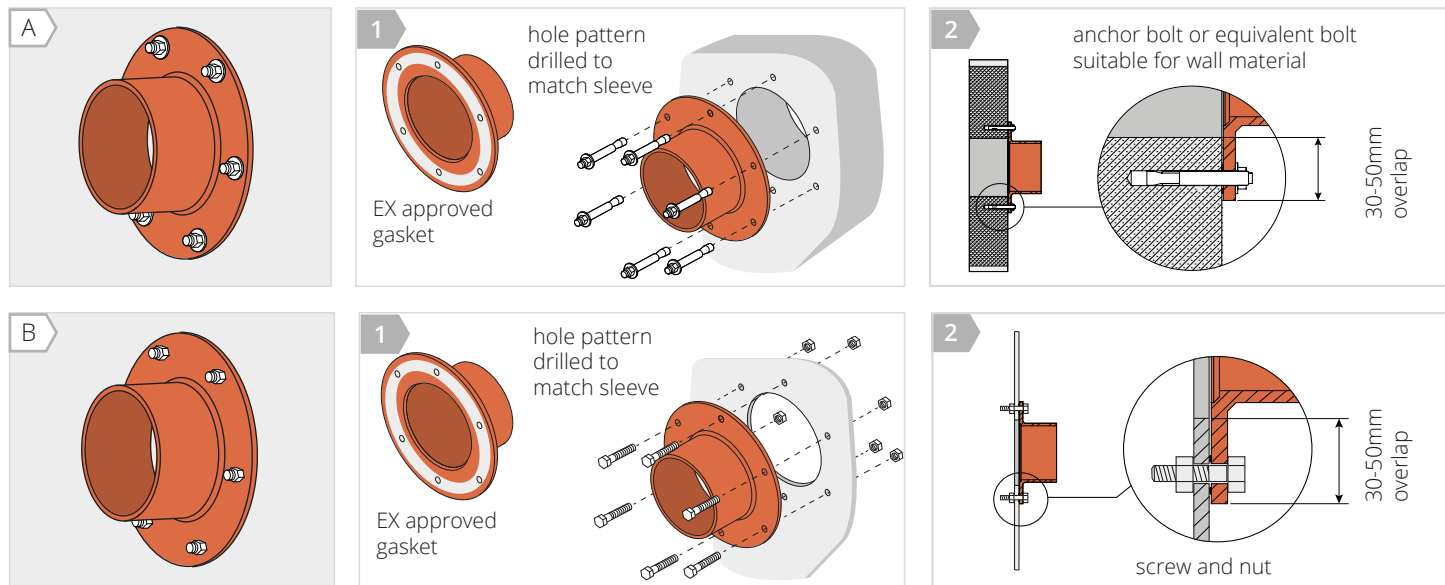
Installation SFR Sleeves



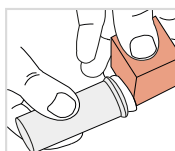
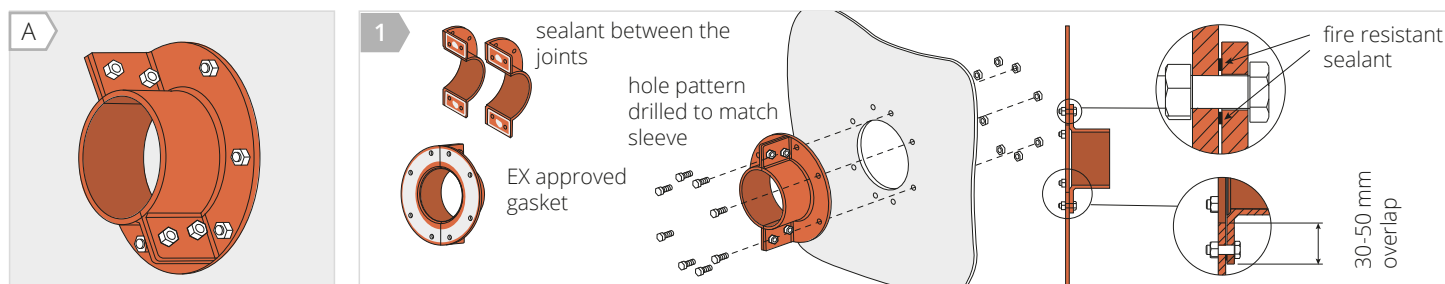
1. Center and position the SFR flange flat to the plate.
2. Tack weld on the front side of the SFR in four places or every 100 mm around the periphery.

3. Continue welding around the front side of the SFR.
4. Complete by seal welding around the rear side of the SFR.

Installation SFRB Sleeves



Installation SFRBO Sleeves



Disclaimer - pressure & watertight installation RGP

- All contact surfaces between the pipe and the RGP plug must be cleaned carefully prior to installation. Do not use any lubricant on these surfaces.
- All blocks and all the inside corners of the RGP must be lubricated carefully with **MCT Brattberg lubricant**.
- The penetration must not be subjected to pressure for at least **48 hours** after installation. This is to allow the pressure to equalise throughout the penetration.
- It will take more time for the pressure to equalise at temperatures below 20°C.
- Installation/testing of transits should only be performed by MCT Brattberg trained installers.
- Note: If the installation is subjected to pressure, all components must be replaced after removal and refitting.

After installation inspection

- Are the screws tightened evenly?
- Verify that the RGP is suitable for the application by checking its certification and type-approvals.

Disclaimer:

This instruction guide may be subject to revision and changes due to development and changes of the material and products. The data is derived from tests and experience. If not stated as minimum values, the data is average data and should be treated as such. Calculations should be verified by actual tests. The data is furnished without liability for the company and does not constitute a warranty or representation in respect of the material or its use.

The company reserves the right to release new instruction guides in replacement.